



AKOYA MGPE6AK (6" x 6") | MGPE12AK (12" x 12") | MGPE18AK (18" x 18")



BURMESE MGPE6BU (6" x 6") | MGPE12BU (12" x 12") | MGPE18BU (18" x 18")



QUEEN MGPE6QU (6" x 6") | MGPE12QU (12" x 12") | MGPE18QU (18" x 18")



401 South 50th Street
Phoenix, AZ 85034
Phone: 602-275-6400
Fax: 602-275-1948

NOTE: All sizes noted are approximate. Variations in size, color and texture are inherent in all of our products. The product you receive may vary from photograph or samples. Always approve current stock before installation.



AKOYA MGPE6AK (6" x 6")
MGPE6AKDBN (DBN) | MGPE6AKSBN (SBN)



AKOYA Bead
MGPE6AKBD (1" x 6")



AKOYA Beak
MGPE6AKBK (1" x 1")



AKOYA V-Cap
MGPE6AKVC (2" x 6")



AKOYA V-Cap Corner
MGPE6AKVCC (2" x 1")



BURMESE MGPE6BU (6" x 6")
MGPE6BUDBN (DBN) | MGPE6BUSBN (SBN)



BURMESE Bead
MGPE6BUBD (1" x 6")



BURMESE Beak
MGPE6BUBK (1" x 1")



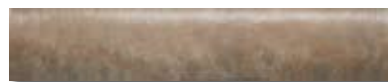
BURMESE V-Cap
MGPE6BUVC (2" x 6")



BURMESE V-Cap Corner
MGPE6BUVCC (2" x 1")



QUEEN MGPE6QU (6" x 6")
MGPE6QUDBN (DBN) | MGPE6QUSBN (SBN)



QUEEN Bead
MGPE6QUBD (1" x 6")



QUEEN Beak
MGPE6QUBK (1" x 1")



QUEEN V-Cap
MGPE6QUVC (2" x 6")



QUEEN V-Cap Corner
MGPE6QUVCC (2" x 1")



QUEEN SBN

MGPE12QUSBN (3" x 12")

ALSO AVAILABLE:

- AKOYA SBN** MGPE12AKSBN (3" x 12")
- BURMESE SBN** MGPE12BUSBN (3" x 12")